

ORDINANCE NO. 307

AN ORDINANCE ESTABLISHING STOP AND YIELD INTERSECTIONS

BE IT ENACTED BY THE COUNCIL OF THE CITY OF SLATER, IOWA:

SECTION 1. *Findings.* The City Council has the authority, as described in article III, section 38A of the Constitution of the State of Iowa and in Chapter 321 of the Code of Iowa (2009), to regulate the stopping of traffic intersections. The City Council deems this ordinance appropriate and necessary to protect, preserve, and improve the rights, privileges, property, peace, safety, health, welfare, comfort, and convenience of the City of Slater and its citizens, all as provided for in and permitted by section 364.1 of the Code of Iowa (2009).

SECTION 2. *Amended Section.* The Code of Ordinances of the City of Slater, Iowa, is hereby amended by enacting the following provisions which shall hereafter constitute subsections 77 of section 65.01 of the Code of Ordinances of the City of Slater, Iowa:

Stop Intersections

77. 10th Ave, at Four Mile Drive, westbound

SECTION 3. *Amended Section.* The Code of Ordinances of the City of Slater, Iowa, is hereby amended by enacting the following provisions which shall hereafter constitute subsections 52 of section 65.03 of the Code of Ordinances of the City of Slater, Iowa:

Yield Intersections

52. Four Mile Circle, at Four Mile Drive, eastbound

SECTION 4. *Repealer.* All ordinances or parts of ordinances in conflict with this ordinance are hereby repealed.

SECTION 5. *Severability.* If any section, provision or part of this ordinance shall be adjudged invalid or unconstitutional, such as adjudication shall not effect the validity of the ordinance as a whole or any section, provision, or part thereof not adjudged invalid or unconstitutional.

SECTION 6. *Effective date.* This ordinance shall be in effect after its final passage, approval and publication as provided by law.

Passed and Approved on the _____ day of _____ 2025.

Taylor Christensen, Mayor

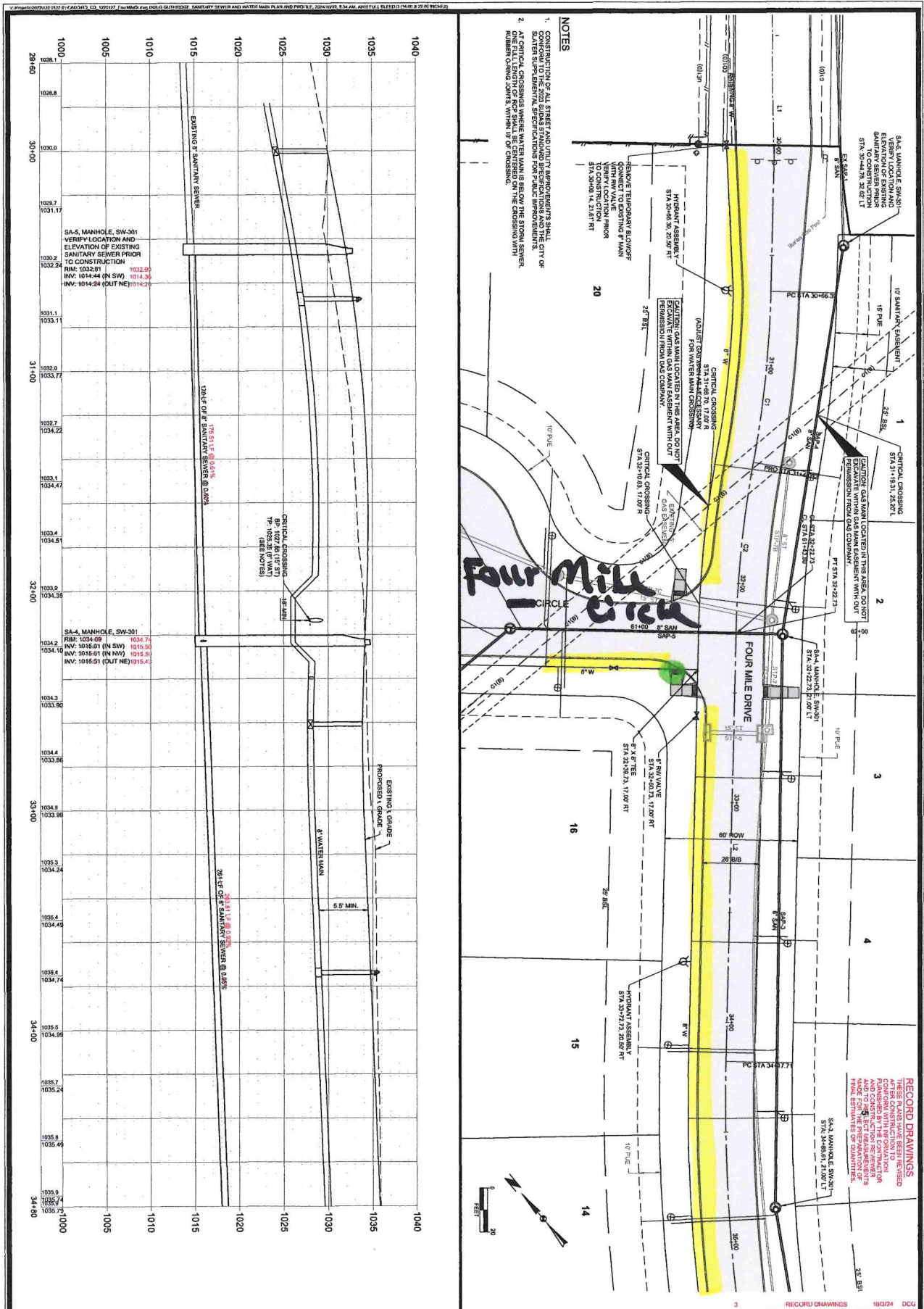
Attest: _____
Jennifer Davies, City Clerk/Administrator

1st Reading: December 9, 2024

2nd Reading

3rd Reading:

Published _____



- Yield sign

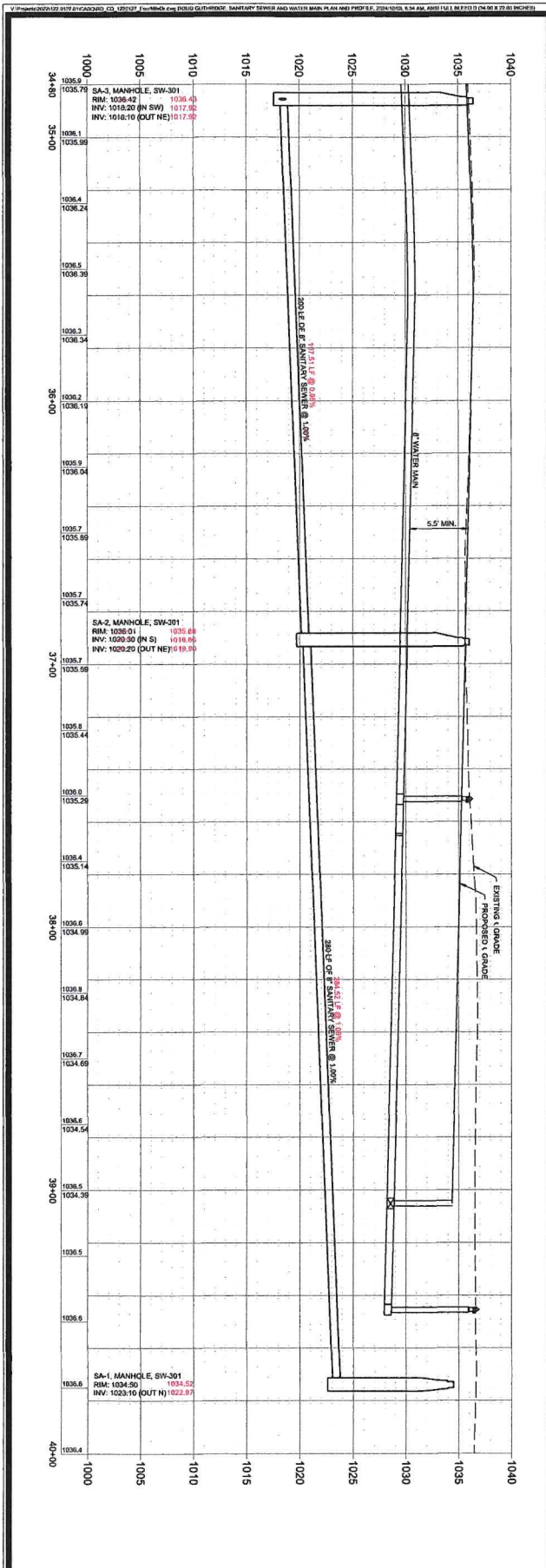
Stop sign

No Parking

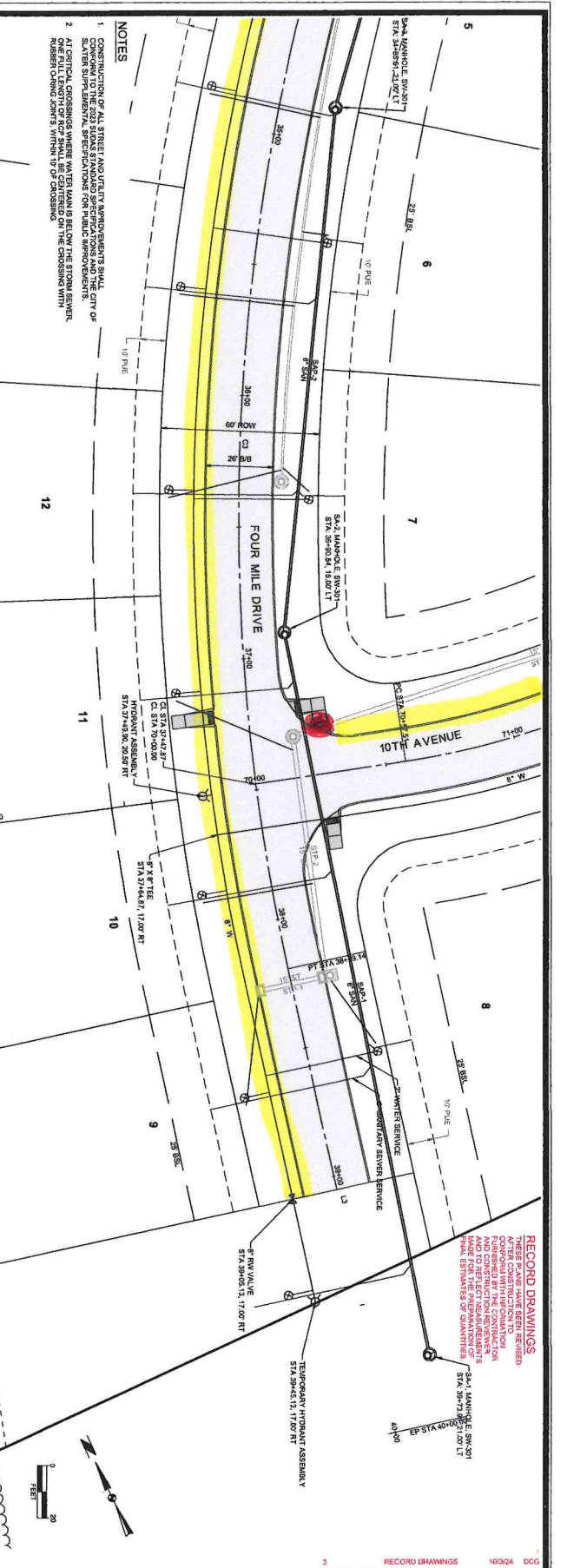
- NOTES**
- CONSTRUCTION OF ALL STREET AND UTILITY IMPROVEMENTS SHALL CONFORM TO THE 2012 IOWA STANDARD SPECIFICATIONS FOR PUBLIC WORKS.
 - AT CRITICAL CROSSINGS WHERE WATER MAINS ARE OVER THE SEWER, ONE FULL LENGTH OF PIPE SHALL BE CENTERED ON THE CROSSING WITH RUBBER CHOKING JOINTS WITHIN 10' OF CROSSING.

RECORD DRAWINGS
 THESE PLANS HAVE BEEN REVIEWED FOR CONFORMANCE WITH IOWA REGULATION AND CONSTRUCTION REQUIREMENTS AND TO ESTABLISH AN ACCURATE FINAL ESTIMATE OF QUANTITIES.

SNYDER & ASSOCIATES, INC. 2727 S.W. SNYDER BLVD ANKENY, IOWA 50023 515-964-2020 www.snyder-associates.com		PRAIRIE CREEK PLAT 8 SANITARY SEWER AND WATER MAIN PLAN AND PROFILE SLATER, IOWA	
Project No: 122.0127.01 Sheet: C400	Project No: 122.0127.01 Sheet: C400	1 REVISED PER INTERNAL REVIEW 07-27-23 CAC MARK REVISION DATE BY Engineer: CDD Checked By: BKC Scale: 1" = 20' Technician: AWS Date: 05-23-2022 I-4-S: 82N-24W-31	RECORD DRAWINGS 10/2/24 DCC



SNYDER ASSOCIATES
 Project No: 122.D127.01
 Sheet C401



PRAIRIE CREEK PLAT 8
SANITARY SEWER AND WATER MAIN PLAN AND PROFILE SLATER, IOWA
SNYDER & ASSOCIATES, INC.
 2727 S.W. SNYDER BLVD
 ANKENY, IOWA 50023
 515-964-2020 | www.snyder-associates.com

MARK	REVISION	DATE	BY
1	REVISED PER INTERNAL REVIEW	07-27-23	CMC

Engineer: CDD Checked By: BKC Scale: 1" = 20'
 Technician: AWS Date: 05-23-2022 14-S: 824-24V-31

Project No: 122.D127.01 Sheet C401

NOTES
 1. CONSTRUCTION OF ALL STREETS AND UTILITY IMPROVEMENTS SHALL CONFORM TO THE 2021 IOWA STANDARD SPECIFICATIONS AND THE CITY OF SLATER, IOWA STANDARD SPECIFICATIONS.
 2. AT CRITICAL CROSSINGS, WHERE WATER MAINS CROSS OVER SANITARY SEWER MAINS, THE WATER MAIN SHALL BE PROTECTED WITH RUBBER CROSSING JOINTS WITHIN 10' OF CROSSING.

RECORD DRAWINGS
 THESE PLANS HAVE BEEN REVIEWED AFTER CONSTRUCTION TO VERIFY CONSTRUCTION TO THE ORIGINAL DESIGN AND TO REFLECT NECESSARY CHANGES. THE CONTRACTOR SHALL BE RESPONSIBLE FOR PROVIDING RECORD DRAWINGS WITH FINAL ESTIMATES OF QUANTITIES.