

# Christmas ON MAIN

**FRIDAY**  
*December 2*  
**SATURDAY**  
*December 3*  
**SUNDAY**  
*December 4*

## Friday

**HOLIDAY OPEN  
HOUSE TOUR**  
5:00 PM - 8:00 PM

## Saturday

**HOLIDAY  
WORKSHOPS**

**10:00 AM-NOON**  
Holiday Card Watercolor Workshop with Two Sisters Paint Palette. @ 601 Main Street.

**NOON - 3:00 PM**  
Fresh wreath making workshop with the Garden Club. @ Log Cabin/ Nelson Park.

**3:00 PM - 6:00 PM**  
Painted Holiday Door Mats with Goods by Glenda. Location TBD.

## Sunday

**FESTIVITIES BEGIN | 2:00 PM**

Enjoy the tree walk in the new Library Lot. Sneak over to Nelson Park to admire Gingerbread House Lane (Slater Parks and Rec). See the live nativity scene presented by Slater Baptist Church and stop by the Library to create a holiday craft. Get a punch card, visit all the activities and turn it in at the fire station for a chance to win a Christmas Movie.

**AT THE SENIOR CENTER**

Have a treat with Santa! Enjoy visiting with Santa and grab a treat for the kiddos on the way out!

**AT THE FIRESTATION | 3:00 PM**

Food and drinks, silent auction, food drive and drawing for prizes (Sponsored by Kevin Holmes/United Real Estate Professionals)

**FREE DRAWING FOR 25 HAMS | 4:45 PM**  
At the tree.

**TREE LIGHTING & FIREWORKS | 5:15 PM**

**CHRISTMAS AT BETHLEHEM CONCERT**  
6:30 PM (Details on Facebook)

**LIKE AND FOLLOW SLATER IOWA COMMUNITY CLUB ON FACEBOOK  
TO GET ALL THE DETAILS ABOUT THE KICKOFF TO THE HOLIDAYS!**

Thanks to all the volunteers who  
helped host another  
"Greater in Slater" event!



**Town and County Market**



**Garden Club**



**Public Works**







The Slater Community Club would like to invite you to participate in "Letters to Santa." All Letters submitted will be entered into a drawing for fun prizes!

Please place your letters in the Santa Mailbox in front of Town and Country Market beginning Monday, November 20 - thru Wednesday, November 30.

Beginning December 1, the mailbox will be located at the Slater Senior Center at 301 Main, where letters will still be accepted! We will draw the two lucky winners at random during Christmas on Main on December 4.

Sincerely, Santa's Elves



#### Park and Rec survey

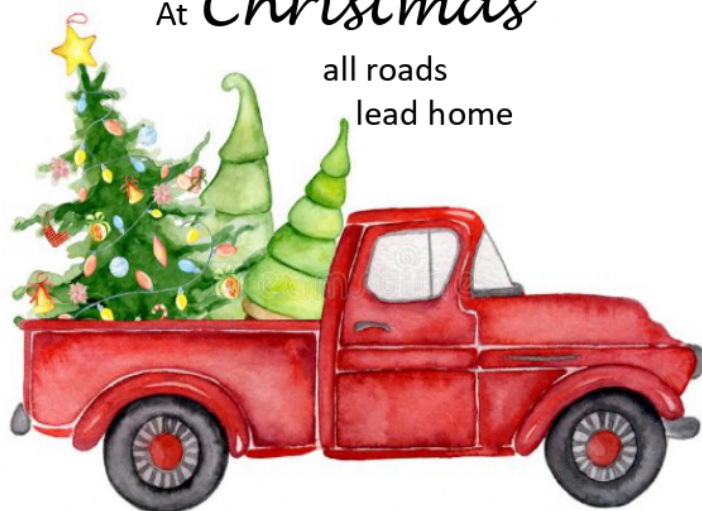
Please take 5 minutes to complete this survey to provide feedback on the activities Slater Park & Rec has organized in the past and help us in 2023 planning.

**Closed for the  
Holiday**

**November 24-25  
December 23 -26**

At *Christmas*

all roads  
lead home



Dear Santa:



My name is

I am

years old.

I live in

This year, I have been really

☐

nice

☐

naughty



For Christmas, please bring me:



Thank you and Merry Christmas!



Love,





# **Slater Garden Club wants to help you decorate for the holidays!**

Holiday Centerpiece Sale at  
Christmas on Main returns!

**Where: Slater Animal Hospital**

**When: 2:00-5:00 p.m.**

**Cost: \$20-\$30 (determined by container size)**

## **3 Options Available:**

1. Choose a freshly made arrangement.
2. Choose a container from our selection and an arrangement will be made to order.
3. Bring your own container and we will design a centerpiece for you with fresh greenery.

Proceeds will be divided between the Garden Club for garden projects in Slater parks and the Building Fund for the new Slater Library and Community Center to help make Slater Greater!





NELSON PARK

# *Gingerbread House Lane*

DEC. 4, 2022 | 2 TO 5 PM

## **Take a stroll on Gingerbread House Lane during Christmas on Main!**

Enjoy a wintery walk featuring gingerbread houses decorated by fellow community members. The Parks and Rec team will be passing out goodies and collecting votes for your favorite gingerbread house design.



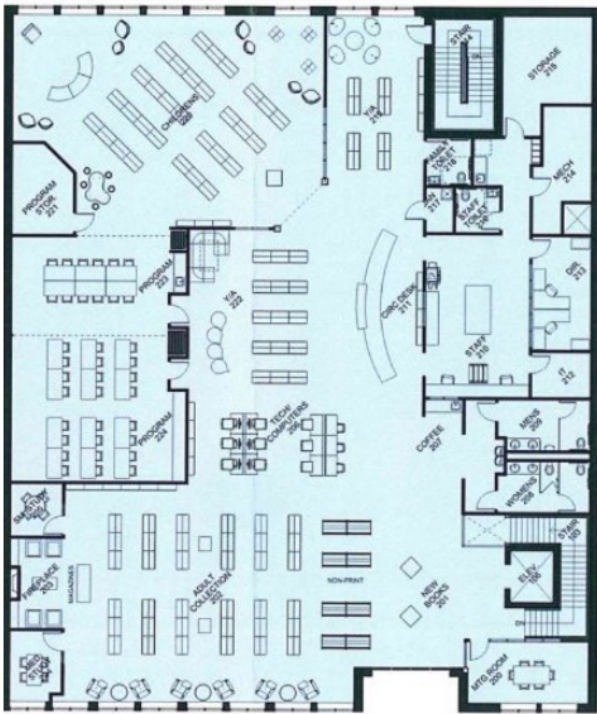
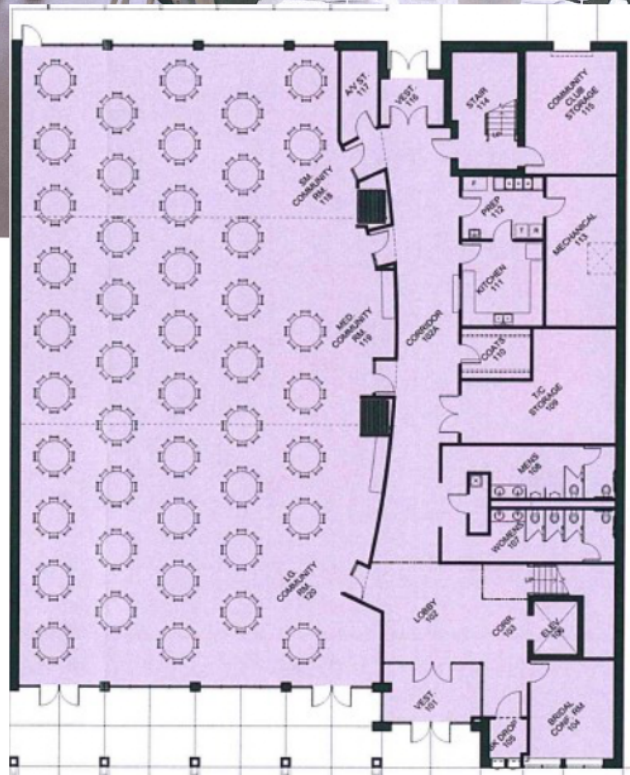
## **Interested in decorating Gingerbread House Lane?**

**Stop by City Hall today to pick up a sign to decorate your very own gingerbread house!**

Let your imagination run wild as you design your 3D gingerbread house! Just remember the signs will lay flat on a table to display your 3D build. You should build UP from the sign, but the footprint of your house should not be larger than the sign and should not spill over the edge. We want to make sure we have room for everyone's creations. Signs will be available for pick-up at City Hall starting the week of November 14th

Deliver your finished gingerbread house creation to Nelson Park on Sunday, December 4th between 12:30 PM and 1:00 PM. Votes will be tallied and prizes will be awarded to the top 2 gingerbread houses in 2 different age categories (0-15 years old & 16 and older). There is no cost to participate.





It's  
**NOT**  
Just a  
*Library!*





# Slater Community Events Center and Library Feedback Form

Slater is in the process of fundraising to build a new combined Community Events Center and Library at 405 Main Street. A September 2022 bond for up to \$2.5 million dollars did not pass. The building committee is seeking feedback from the community to help assess our plan and ongoing fundraising efforts.

More than one person 18 or older per household may complete this survey, which is anonymous and will take less than 2 minutes to complete.

Thank you in advance for your participation!

☐ I support the Community Events Center and Library building project.

☐ I do not support the Community Events Center and Library.

It's  
**NOT**  
Just a  
*Library!*

Bonding for the new building is not our first choice in funding. However, a successful bond vote will make Slater eligible for larger grants that require 50-60% of the total project costs to be secured before applying. Please indicate your level of support for a \$2.5 million bond issue in March.

☐ I will vote YES to a \$2.5 million bond referendum in March.

☐ I will vote NO to a \$2.5 million bond referendum in March.

☐ I need more information before making my decision.

☐ Other:

Which of the following would cause you to vote NO to a bond referendum? Please mark all that apply.

☐ I do not want my property taxes to increase.

☐ I do not think Slater needs a new Public Library.

☐ I do not think Slater needs a Community Events Center.

☐ I do not agree with the Main Street location.

☐ Other:



Or scan QR code  
for Survey

What additional information would you like about the project? What type of communication do you prefer (print, online, in-person meeting, etc.)?

Please feel free to make any comments, positive or negative, about the proposed building project.

Please return your survey to city hall OR to a water bill box by **FRIDAY, DECEMBER 16.**





Winter 2022-23

# SLATER PUBLIC

105 N Tama 515-228-3558 [www.slaterlibrary.org](http://www.slaterlibrary.org)

Hours: M-TH 10 a.m.-7 p.m., Fri. 10 a.m.-5 p.m., Sat. 10 a.m.-noon

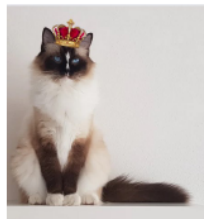


Meet n' Eat is scheduled for **Friday, December 4th**. A free-will lunch consisting of chili and cinnamon rolls will be served from **11:30 a.m. - 12:30 p.m.** Scott Keese will be playing Christmas music for our enjoyment.



## Build Your Cat a Castle

Just in time for Christmas! Be sure to join us Monday, December 19th, from 5:30 pm to 6:30 pm to give your king or queen the gift they think they deserve. Repurpose boxes to create an epic abode for your cat. For all ages, kids must be accompanied by an adult. Supplies provided.



## Programs

Slater Tots - Wednesdays, 10 a.m.

Early-Out Program - Wednesdays, 1:30-3:00 p.m.  
(registration full)

Yoga - Tuesdays and Thursdays, 9:00-9:45 a.m.

Coffee - Fridays, 10 a.m.

Meet n' Eat - Fridays, Dec. 4, Feb. 3, March 3 at 11:30 a.m.

Book Club - Dec. 15, Jan. 19, Feb. 16, March 23

Sticks & Strings - First Wednesday of each month at  
5:30 p.m.

Evening Wind Down - check website for dates & times

Build Your Cat a Castle - Mon., Dec. 19, 5:30-6:30 p.m.

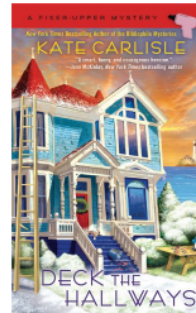
We will be **CLOSED** on the following dates:

**December 23-26 and 31 also January 2 and 16.**



Set your calendars for Slater's annual Christmas on Main celebration, Sunday, December 4 from 2:00-5:00 p.m. The library will have fun Grinch photo booth props, Christmas crafts, and Christmas movies for the kids. Stop in and see us!

## Book Club



The selection for December is ***Deck the Hallways*** by Kate Carlisle. Discussion will be on Thursday, December 15th at 10 a.m. and 5:30 p.m.

Even during the holidays, Shannon is more spackle than sparkle, which is why she leaps at the chance to transform a grand old Victorian mansion into ten charming apartments for homeless families. Filled with the spirit of the season, all of Lighthouse Cove turns out to help—including her best friends, a troupe of far-from-angelic Santa Claus impersonators, and her father, Jack.

But their merriment is soon dashed by a heated scuffle between Jack and the miserly president of the bank who's backing the project. When the man is murdered, all eyes are on Jack, and visions of prison time dance in Shannon's head. Now, she needs to pull off a crime-solving miracle, before her father's Christmas goose is cooked...

The selection for January is ***Mrs. Harris Goes to Paris*** by Paul Gallico. Discussion will be Thursday, January 19 at 10 a.m. and 5:30 p.m. A movie showing and light lunch will be at 11 a.m. at the library.

Mrs Harris is a salt-of-the-earth London charlady who cheerfully cleans the houses of the rich. One day, when tidying Lady Dant's wardrobe, she comes across the most beautiful thing she has ever seen in her life - a Dior dress. In all the years of her drab and humble existence, she's never seen anything as magical as the dress before her and she's never wanted anything as much before. Determined to make her dream come true, Mrs Harris scrimps, saves and slaves away until one day, after three long, uncomplaining years, she finally has enough money to go to Paris.

When she arrives, Mrs Harris takes Paris by storm and learns one of life's greatest lessons along the way.



In February we will be reading ***Text for You*** by Sofie Cramer. Following our discussion we will go see the movie, ***Love Again***, at the theatre. The movie is based on this book. Watch our website for more details.





# THE SLATER AREA HISTORICAL ASSOCIATION

318 First Ave, P.O. Box 487, Slater, IA 50244 515.228.3832 Slaterhist@huxcomm.net www.slaterhistory.org

**Open Thursdays 10-2, or by appointment - call 515-480-9789**

## SLATER FLAG WINS INTERNATIONAL CONTEST!



In 2014 the Slater Area Historical Association sponsored a contest to design a flag for our town. Mary Raes Okakpu won, and SAHA has made the flag available since then. In an exciting competition held on social media our Slater flag was pitted against the best regional flags from the USA and from around the world. Viewers voted for flags from over 400 entries. The Slater Flag won first place!



*Dave Carter and Tracy Abbott of Flagsession*

Dave Carter and Tracy Abbott of New Zealand founded **Flagsession** and created several different interactive contests, then decided to pit USA regional flags against those of other nations. Flags were posted on Instagram and Facebook and people voted for their favorites in succeeding elimination rounds. Slater won over hundreds of other flags! **Flagsession** videos are available on their YouTube channel and Facebook.

**You can see their 10 minute video  
about Slater and its flag. Go to our  
Facebook page!**

**THANK YOU TO ALL WHO VOTED FOR OUR FLAG.  
YOU MADE THIS HAPPEN!**

**WE WILL BE OPEN DURING  
CHRISTMAS ON MAIN. COME TAKE  
YOUR PHOTO IN OUR REAL  
CHRISTMAS SLEIGH!**

## NEW CHRISTMAS CARD AVAILABLE 10<sup>TH</sup> IN THE SERIES



*"Wishing You the Peace of the Season Now and Always"*  
For the last 9 years SAHA has challenged itself to create a unique holiday card picturing a Slater scene. This year we've illustrated the Chuck and Helen Hoeven Gazebo in Slater's Nelson Park, all decked out to celebrate the season. To recognize the 10<sup>th</sup> issuing of our holiday cards we have decided to offer the five-packs of past cards for \$4.00.

*The 2022 cards are sold individually for a dollar apiece  
or in packs of 5 for \$5. You can stop by the Hall on  
Thursdays, or call or text Barb at 515-480-9789 or any  
of the Board members to order. We can deliver and we  
can also mail to your address.*

## LETTERS FROM SANTA OUR HOLIDAY EXHIBIT!



*From the era of "Leave It To Beaver" and  
Ralphie in "The Christmas Story", the exhibit  
"Letters to Santa" is a nostalgic trip!*

The display features letters that Slater school kids wrote to Santa in the 1950's and 1960's that were published in *The Slater News*. You may find your grandparents, parents, aunts, or uncles asking for their 3<sup>rd</sup> grade wishes!

**ON DISPLAY STARTING DECEMBER 4**

# Join the Friends!

Dear Friend,

You are invited to become a Friend of the Slater Public Library (SPL). With your support, our community and library will continue to grow stronger!

Did you know that the Slater Public Library ranked in the top 10 in the state of Iowa for Program Attendance in 2021, including adult and children's programming? We had over twice as many items checked out last year than other libraries our size, that is over 33,000 items checked out! Slater Public Library welcomed over 20,000 friends through our doors, double the average of ALL libraries in Iowa. Our Librarians welcome people from not just Slater but from surrounding towns and cities as well including, but not limited to, Ames, Ankeny, Madrid, Polk City, Boone, Huxley, and Nevada.

We continue to raise funds for the building project. The Slater Community Events Center and Public Library project has the potential to have a huge impact on our community, families and local businesses. This joint project aims to fill needs in the community for both event space AND library space where both function as a place to connect, grow, learn, and build relationships within our community—making it stronger. Imagine a nice warm, big area that is inside for Christmas on Main or expanding our youth programming in the Library! The funds you provide when you become a Friend of SPL go towards the building fund as well as funding the numerous programs the Library has and so much more.

Ways you can support the Friends of SPL:

- Join the Friends of SPL email list to stay current on the happenings and follow us on Facebook and Instagram
- Add Slater Public Library to your Amazon Smile account:
  - In your browser, type: [smile.amazon.com](https://smile.amazon.com). Then, login to your regular Amazon account.
  - From there, it prompts you to choose the organization you wish to sync with, in this case it will be 'Friends of the Slater Public Library'.
  - Once you make your purchase, then the 0.5% automatically gets donated to the library.
- Donate by cash, check or PayPal!
  - PayPal account name: [friendsofspl@slaterlibrary.org](mailto:friendsofspl@slaterlibrary.org)
  - Checks made out to Friends of the Slater Public Library

Become a member today! Friends of the SPL Donor Tiers:

- \$20.00: Friend
- \$50.00: Good Friend
- \$100.00: Dear Friend
- \$250.00: Great Friend
- \$500.00: Best Friend
- \$1,000.00+: V.I.P. Friend

Sincerely,

Friends of the Slater Public Library Board

Lora Gibson, Megan Buttz and Tiffani Brendeland





# Thank You!!

to everyone who came out to share in the fun at 2022 Fall Fest,  
to Slater United Methodist Church volunteers, Troop 163,  
the vendors and to our prize sponsors.  
Plans are in the works for next year!



**Fall Fest & Vendor Fair**

*This event could not happen without the help of our generous sponsors:*

- South Story Bank & Trust
- Caseys
- Walmart
- Nite Hawk Bar and Grill
- Flight Bar and Grille
- Mason's Tire
- Larry's Town and Country
- B Fabulous BBQ and Catering
- The Local Supply Co. & Double Dipped
- Theisen's
- Slater Animal Hospital

*Thank you!*







# Thank you!

Gather was a huge success and thanks to our sponsors, donors, and guests we raised \$30,000 for the Community Events Center and Library!

## Sponsors

The Farmers Locker  
 Heather Knittle Real Estate  
 Chicken Shed Primitives  
 Atlas Electric  
 Harris Boring  
 Vision Bank  
 Family Chiropractic & Wellness  
 Huxley Communications  
 Blomgren Seed  
 Carrell Family Chiropractic  
 Hokel Real Estate  
 Danfoss  
 Public House  
 Clean Machine  
 Fareway  
 Sheldahl Crossing  
 Something Blue  
 The Parlour  
 Story County Pork Producers







## **Snowmobiles**

Let it Snow...

...please respect the property of others and stay on designated snowmobile trails.

...The City trail, east of the High Trestle Trail from 1st Ave to the north edge of Grimm Park, will NOT be plowed in order for snowmobile use.

...However, the HTT trail, Sievers' Trail, and Grimm Park WILL be cleared for walkers.

...For more info on area snowmobile trails and activities go to:  
[www.saylorvilledamsnowmobileclub.org](http://www.saylorvilledamsnowmobileclub.org)

# CHECK OUT OUR WEBSITE

[Slateriowa.org](http://Slateriowa.org)

"no person shall park, abandon or leave, whether occupied or not, any vehicle on any public street or alley during any snowfall and for the twenty-four (24) hours following cessation of snowfall"

Fines for violating this ordinance are \$35.00

# Let it Snow



**Nov 1-April 1** | Snow Ordinance.

# POLITE NOTICE

YOUR DOG DID HIS DUTY  
... NOW DO YOURS



# PLEASE CLEAN UP AFTER YOUR PET

How to contact City Hall

515-685-2531

[slateriowa@huxcomm.net](mailto:slateriowa@huxcomm.net)

[cityofslater@huxcomm.net](mailto:cityofslater@huxcomm.net)

[Slateriowa.org](http://Slateriowa.org)

In person

Monday –Friday 8am-5pm

101 Story Street



*City of Slater*

*PO Box 538*

*Slater, Iowa 50244*

PRSRT STD

ECRWSS

U.S. POSTAGE PAID

Postal Customer